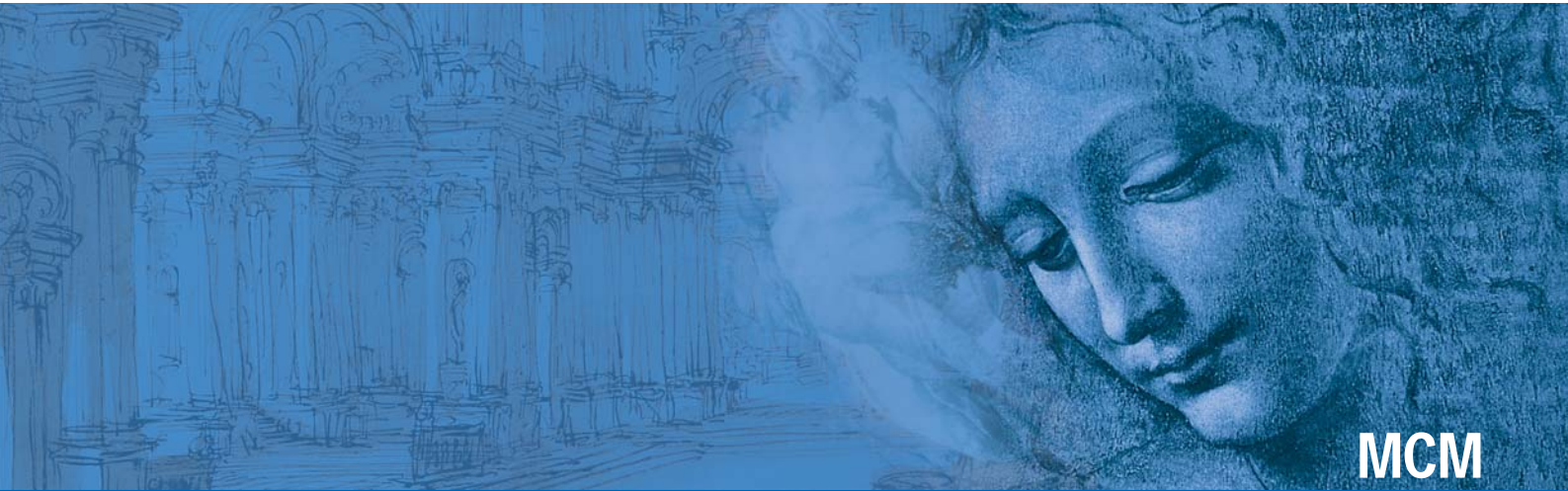




GREEN ELECTRONICS



**MCM**

Terminal Blocks



ISO  
9001



ISO  
14001



BS OHSAS  
18001:2007



**Sauro®**

**ELECTRONIC CONNECTORS**

*by the law*

## Functional characteristics



**Dimensional class:**  
high



**Standard colour:**  
green



**Height:**  
14.45 mm (.569 in)



**Max approved wire sections:**  
solid: 2.5 mm<sup>2</sup> (VDE); 12 AWG (UL)  
stranded: 2.5 mm<sup>2</sup> (VDE); 12 AWG (UL)

**Wire opening size:**  
2.4 x 2.5 mm (.094 x .098 in)



**Versions:**  
modular

**Single mould poles:**  
from 1 (modular)



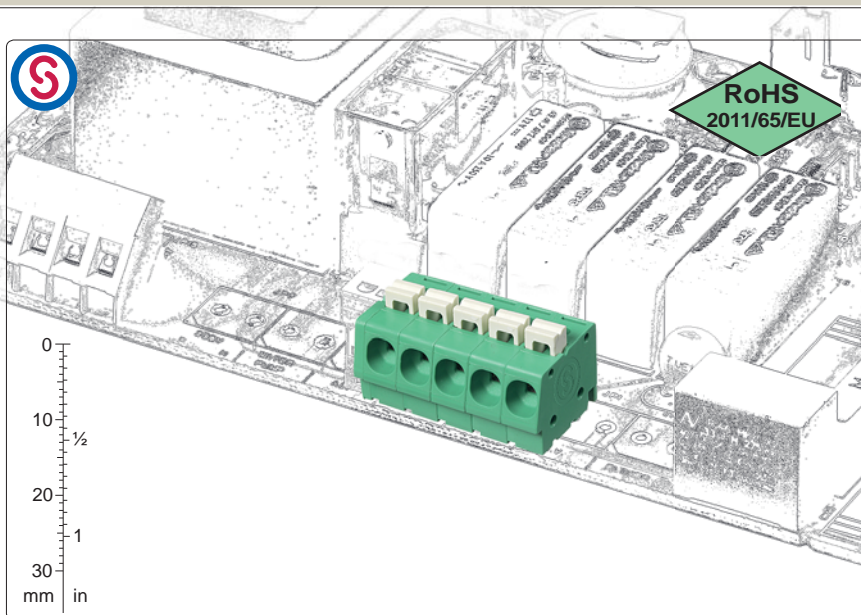
**Pitches:**  
metric 5 mm, 7.5 mm, 10 mm  
(.197 in, .295 in, .394 in)



imperial 5.08 mm, 7.62 mm, 10.16 mm  
(.200 in, .300 in, .400 in)



**Solderable at a temperature up to**  
270°C / 518°F



**S** 270°C

straight, modular-side entry  
pitch 5.08 mm



**S** 270°C

straight, modular-side entry  
pitch 7.5/7.62 mm



**S** 270°C

straight, modular-side entry  
pitch 10/10.16 mm



**n**ew

MCM-BSC\_  
pitch 5/5.08 mm  
pitch 7.5/7.62 mm  
pitch 10/10.16 mm



**n**ew

BSC\_0L\_  
pitch 5/5.08 mm: 9 poles  
pitch 7.5/7.62: 5 poles  
pitch 10/10.16 mm: 5 poles



**n**ew

**S** 270°C  
MCM000M0  
terminal plate

## Brief description

The MCM series of terminal blocks allow a high current rating by means of a contact spring wiring system. This product maintains a tightening force which is comparable to the rising clamp system.

Moreover, by using a contact spring system wire connections can be achieved quickly and they are not affected by vibrations. It is possible to use rigid or flexible wires with ferrules, but flexible wires without ferrules can also be used by pressing on the appropriate switch.

It is available in metric pitches: 5 mm (.197 in), 7.5 mm (.295 in) and 10 mm (.394 in) and in imperial pitches: 5.08 mm (.200 in), 7.62 mm (.300 in) and 10.16 mm (.400 in) in a single pole housing block.

All the housings are modular, therefore it is possible to compose the

terminal block to any number of pole and/or colour. By taking advantage of this particular characteristic a minimum stock of basic terminal blocks can be kept.

Short circuit bridges are available to connect adjacent poles without obstructing the wire entry. They can be inserted either before or after soldering the terminal block to the PCB.

It is simple to manage product, warehouse and assembly with the Kit packages because several versions can be received with only one code, the part-numbers being significantly reduced and the risk of making mistakes is also reduced.

## Characteristics of components

Steel clamping spring.

Polyamide housing.

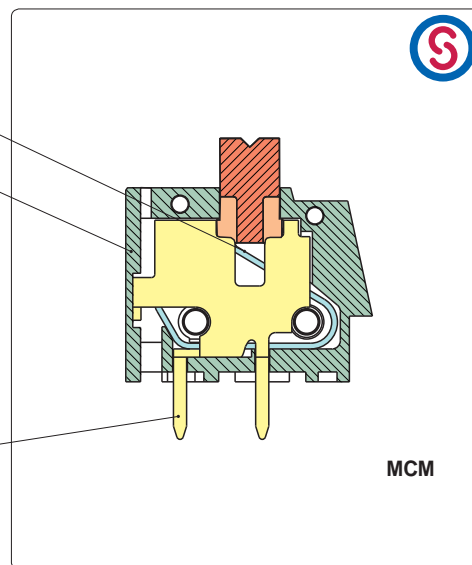
Standard colour: GREEN.

V0 self-extinguishing according to UL 94.

Chlorinated solvents resistant,  
with no phosphor, dioxin or  
detrimental to health halogens.

Easy to solder lead-free

tin-plated copper alloy pin.



## Mechanical characteristics

PCB thickness:	max. 2.4 mm (.094 in)
PCB hole diameter:	min. 1.2 mm (.047 in)
Stripping length	10 / 11 mm (.394 / .433 in)
Operating temperature range	-40 °C ÷ +110 °C (-40 °F ÷ +230 °F)
Climatic category	40/110/21 according to EN 60068-1

## Electrical characteristics \*

Solid wire section	30÷12 AWG (UL)*; 0.2 ÷ 2.5 mm <sup>2</sup> (VDE)*
Stranded wire section	30÷12 AWG (UL)*; 0.2 ÷ 2.5 mm <sup>2</sup> (VDE)*
Rated voltage for 5 mm (.197 in) and 5.08 mm (.200 in)	300 V (UL)*
Rated voltage for 7.5 mm (.295 in), 7.62 mm (.300 in), 10 mm (.394 in) and 10.16 mm (.400 in)	750 V (VDE)*
Rated current	16 A (UL, VDE)*
Rated current (low rated current version)	8 A (IEC EN)
Contact resistance	<15 mΩ
Insulation resistance	>10 <sup>9</sup> Ω (500V DC)

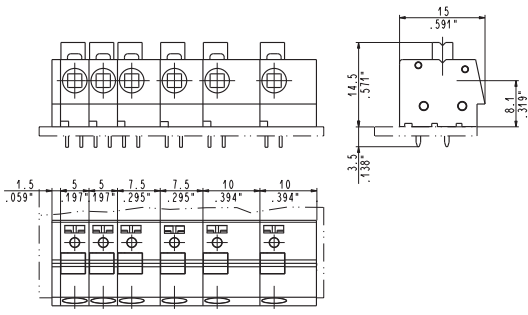
\*All the above mentioned data refer to the highest values amongst the certified ones.

V voltage, I current values and tightening torque are related to the norms to be applied to the product and to its use.

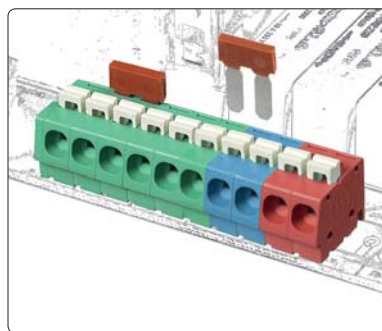
## Approvals

IEC-EN	IEC:	250 V - 16 A - 2.5 mm <sup>2</sup> - T 110 for 5 mm, 5.08 mm pitch
	EN 60998	750 V - 16 A - 2.5 mm <sup>2</sup> - T 110 for 7.5 mm, 7.62 mm, 10 mm and 10.16 mm pitch
UL	UL:	300 V - 16 A - 30÷12 AWG for 5 mm, 5.08 mm, 7.5 mm and 7.62 mm pitch
	File E167473	600 V - 16 A - 30÷12 AWG for 10 mm and 10.16 mm pitch
		Application values for end-use equipment have to be in accordance to UL norms and applicable to them.
VDE	VDE:	250 V - 16 A - 2.5 mm <sup>2</sup> - T 110 for 5 mm, 5.08 mm pitch
	File n.40029775	750 V - 16 A - 2.5 mm <sup>2</sup> - T 110 for 7.5 mm, 7.62 mm, 10 mm and 10.16 mm pitch

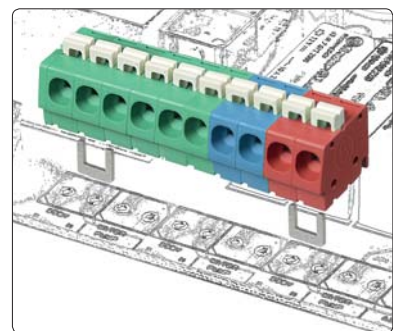
Examples of assembly



IT patent pending

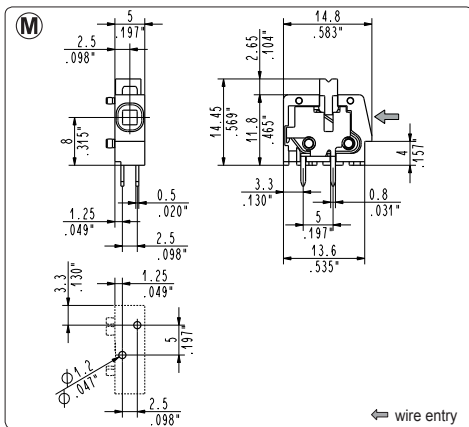


Customization which can be modified  
Bridges for short circuit to be inserted in the terminal block either before or after soldering.



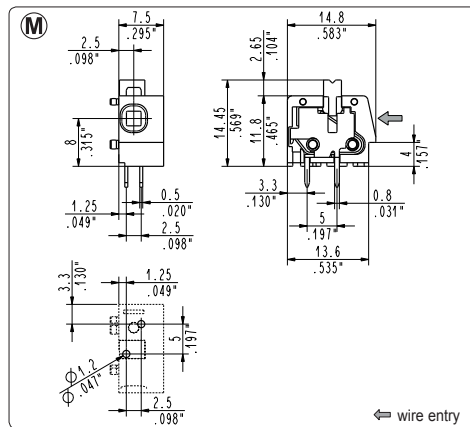
Customization which cannot be modified  
after soldering  
Bridges for short circuit to be inserted in the terminal block before soldering.

TERMINAL BLOCKS



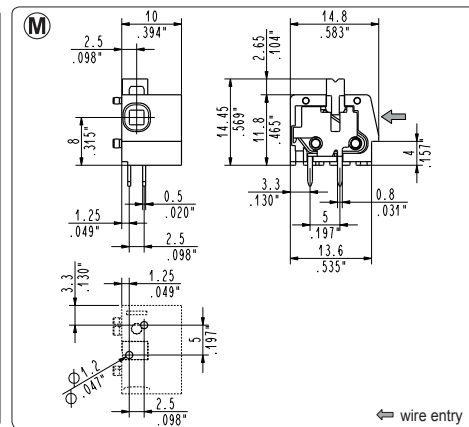
**MCM\_0M1** straight, modular  
5 mm / .197" pitch Weight per pole: 1.20 g

Poles	Code	Pcs./pack.	W [kg]*	Pcs/Ind.**	W [kg]*
01	MCM010M1	500	0,60	1500	1,80



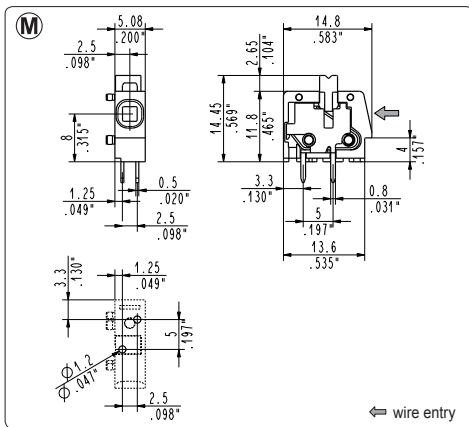
**MCM\_0M3** straight, modular  
7.5 mm / .295" pitch Weight per pole: 1.25 g

Poles	Code	Pcs./pack.	W [kg]*	Pcs/Ind.**	W [kg]*
01	MCM010M3	400	0,50	1000	1,25



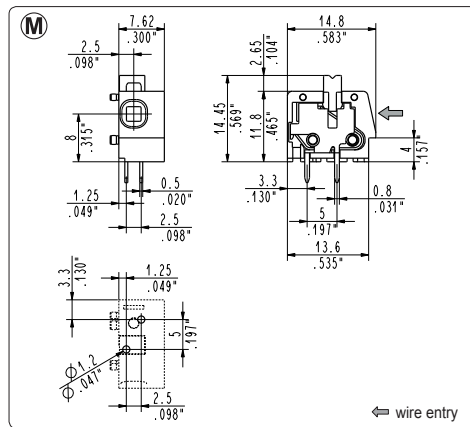
**MCM\_0M2** straight, modular  
10 mm / .394" pitch Weight per pole: 1.30 g

Poles	Code	Pcs./pack.	W [kg]*	Pcs/Ind.**	W [kg]*
01	MCM010M2	400	0,52	1000	1,30



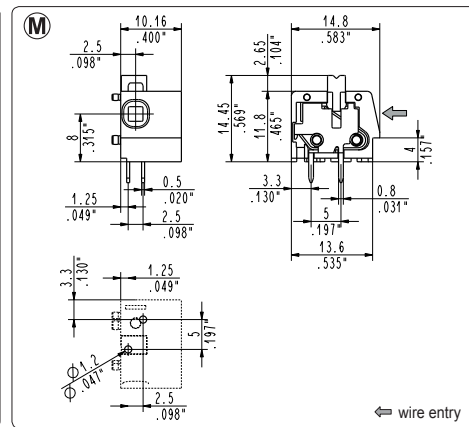
**MCM\_0M5** straight, modular  
5.08 mm / .200" pitch Weight per pole: 1.20 g

Poles	Code	Pcs./pack.	W [kg]*	Pcs/Ind.**	W [kg]*
01	MCM010M5	500	0,60	1500	1,80



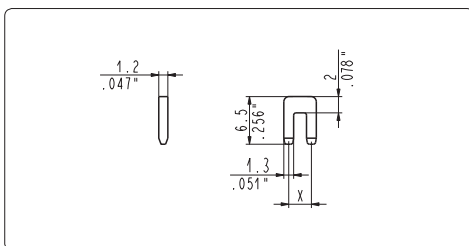
**MCM\_0M7** straight, modular  
7.62 mm / .300" pitch Weight per pole: 1.25 g

Poles	Code	Pcs./pack.	W [kg]*	Pcs/Ind.**	W [kg]*
01	MCM010M7	400	0,50	1000	1,25



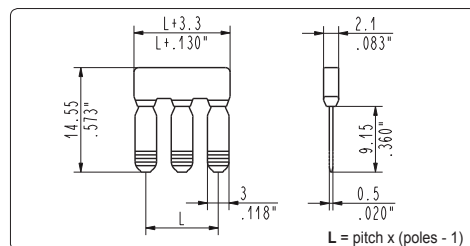
**MCM\_0M6** straight, modular  
10.16 mm / .400" pitch Weight per pole: 1.30 g

Poles	Code	Pcs./pack.	W [kg]*	Pcs/Ind.**	W [kg]*
01	MCM010M6	400	0,52	1000	1,30



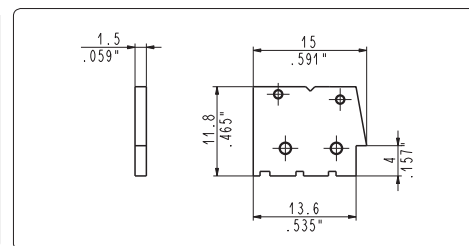
**MCM-BSC\_** bridge for MCM

Pitch	Code	Pcs./pack.	W [kg]*	Pcs/Ind.**	W [kg]*
5 mm / .197"	MCM-BSC1	250	0,05	1250	0,26
5.08 mm / .200"	MCM-BSC5	250	0,05	1250	0,26
7.5 mm / .295"	MCM-BSC3	200	0,04	1000	0,23
7.62 mm / .300"	MCM-BSC7	200	0,04	1000	0,23
10 mm / .394"	MCM-BSC2	200	0,04	1000	0,25
10.16 mm / .400"	MCM-BSC6	200	0,04	1000	0,25



**BSC\_0L\_** removable bridge for MCM

Pitch	Code	Pcs./pack.	poles	Pcs/Ind.**	W [kg]*
5 mm / .197"	BSC_0L1	250	2 - 9	1250	0,26-1,17
5.08 mm / .200"	BSC_0L5	250	2 - 9	1250	0,26-1,17
7.5 mm / .295"	BSC_0L3	200	2 - 5	1000	0,23-0,58
7.62 mm / .300"	BSC_0L7	200	2 - 5	1000	0,23-0,58
10 mm / .394"	BSC_0L2	200	2 - 5	1000	0,25-0,62
10.16 mm / .400"	BSC_0L6	200	2 - 5	1000	0,25-0,62

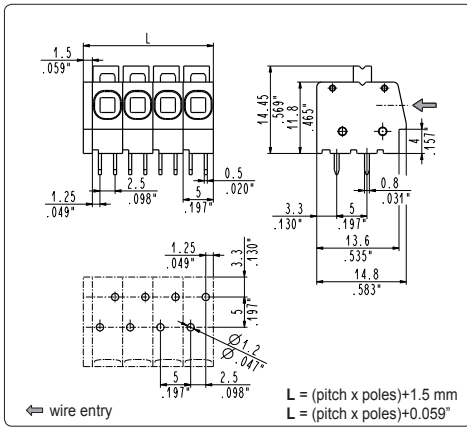


**MCM000M0** terminal plate

Code	Pcs./pack.	W [kg]*	Pcs/Ind.**	W [kg]*
MCM000M0	250	0,08	1000	0,31

\*W [kg]: approximate weight per box in kg

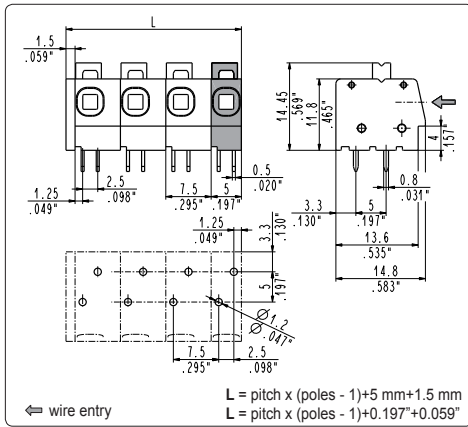
\*\*industrial packaging: add "-00000E" at standard code



**MCM\_001** straight, side stackable

5 mm / .197" pitch

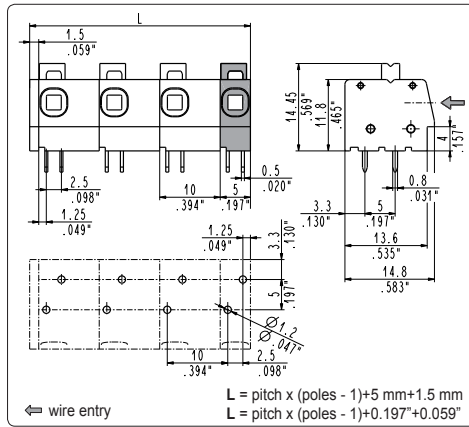
Poles	Code	Pcs/pack.	W [kg]*	Pcs/Ind.**	W [kg]*
02	MCM02001	350	0,84	1400	3,36
03	MCM03001	250	0,90	1000	3,60
04	MCM04001	175	0,84	700	3,36
05	MCM05001	150	0,90	600	3,60
06	MCM06001	125	0,90	500	3,60
07	MCM07001	100	0,84	400	3,36
08	MCM08001	100	0,96	400	3,84
09	MCM09001	75	0,81	300	3,24
10	MCM10001	75	0,90	300	3,60
11	MCM11001	75	0,99	300	3,96
12	MCM12001	75	1,08	300	4,32
13	MCM13001	60	0,94	240	3,34
14	MCM14001	60	1,01	240	4,03
15	MCM15001	60	1,08	240	4,32
16	MCM16001	50	0,96	200	3,84
17	MCM17001	50	1,02	200	4,08
18	MCM18001	45	0,97	180	3,89
19	MCM19001	45	1,03	180	4,10
20	MCM20001	40	0,96	160	3,84
21	MCM21001	40	1,01	160	4,03
22	MCM22001	35	0,92	140	3,70
23	MCM23001	35	0,97	140	3,86
24	MCM24001	30	0,86	120	3,46
25	MCM25001	30	0,90	120	3,60



**MCM\_003** straight, side stackable

7.5 mm / .295" pitch

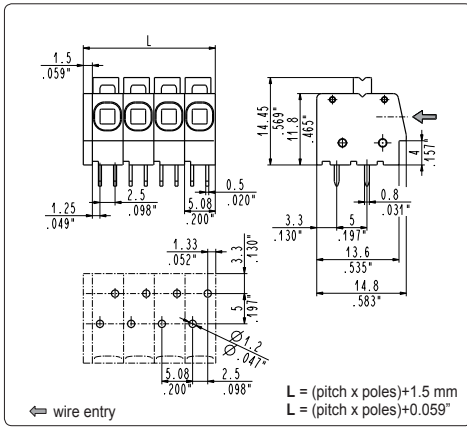
Poles	Code	Pcs/pack.	W [kg]*	Pcs/Ind.**	W [kg]*
02	MCM02003	250	0,63	1000	2,52
03	MCM03003	175	0,66	700	2,65
04	MCM04003	125	0,63	500	2,52
05	MCM05003	100	0,63	400	2,52
06	MCM06003	100	0,76	400	3,02
07	MCM07003	75	0,66	300	2,65
08	MCM08003	75	0,76	300	3,02
09	MCM09003	50	0,57	200	2,27
10	MCM10003	50	0,63	200	2,52
11	MCM11003	50	0,69	200	2,77
12	MCM12003	50	0,76	200	3,02



**MCM\_002** straight, side stackable

10 mm / .394" pitch

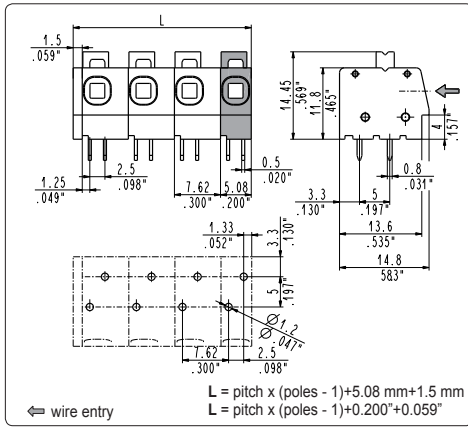
Poles	Code	Pcs/pack.	W [kg]*	Pcs/Ind.**	W [kg]*
02	MCM02002	175	0,46	700	1,82
03	MCM03002	150	0,59	600	2,34
04	MCM04002	100	0,52	400	2,08
05	MCM05002	100	0,65	400	2,60
06	MCM06002	100	0,78	400	3,12
07	MCM07002	75	0,68	300	2,73
08	MCM08002	75	0,78	300	3,12
09	MCM09002	45	0,53	180	2,11
10	MCM10002	30	0,39	120	1,56
11	MCM11002	30	0,43	120	1,72
12	MCM12002	30	0,47	120	1,87
13	MCM13002	30	0,51	120	2,03



**MCM\_005** straight, side stackable

5.08 mm / .200" pitch

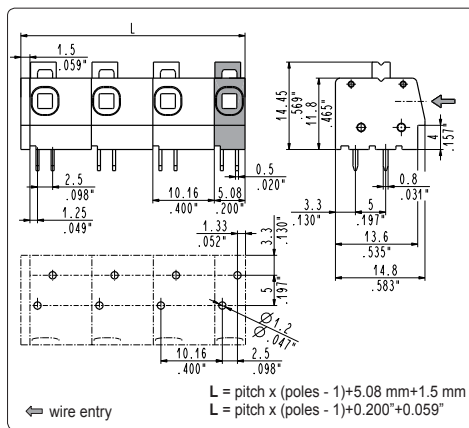
Poles	Code	Pcs/pack.	W [kg]*	Pcs/Ind.**	W [kg]*
02	MCM02005	350	0,84	1400	3,36
03	MCM03005	250	0,90	1000	3,60
04	MCM04005	175	0,84	700	3,36
05	MCM05005	150	0,90	600	3,60
06	MCM06005	125	0,90	500	3,60
07	MCM07005	100	0,84	400	3,36
08	MCM08005	100	0,96	400	3,84
09	MCM09005	75	0,81	300	3,24
10	MCM10005	75	0,90	300	3,60
11	MCM11005	75	0,99	300	3,96
12	MCM12005	75	1,08	300	4,32
13	MCM13005	60	0,94	240	3,34
14	MCM14005	60	1,01	240	4,03
15	MCM15005	60	1,08	240	4,32
16	MCM16005	50	0,96	200	3,84
17	MCM17005	50	1,02	200	4,08
18	MCM18005	45	0,97	180	3,89
19	MCM19005	45	1,03	180	4,10
20	MCM20005	40	0,96	160	3,84
21	MCM21005	40	1,01	160	4,03
22	MCM22005	35	0,92	140	3,70
23	MCM23005	35	0,97	140	3,86
24	MCM24005	30	0,86	120	3,46
25	MCM25005	30	0,90	120	3,60



**MCM\_007** straight, side stackable

7.62 mm / .300" pitch

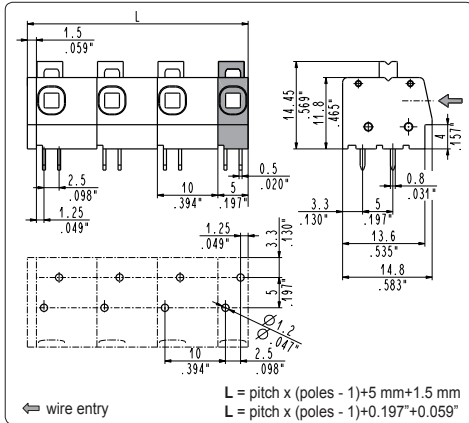
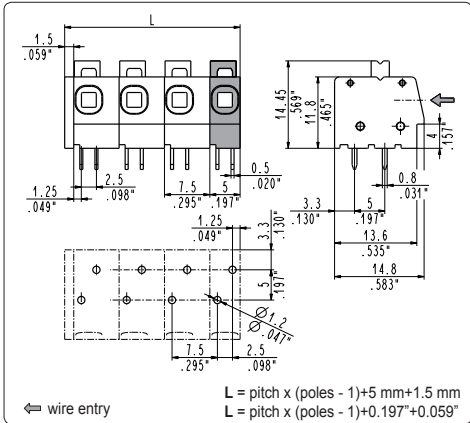
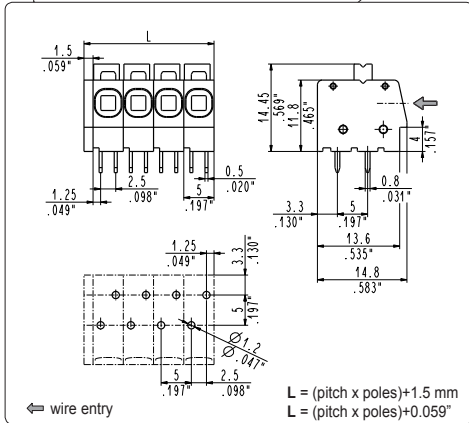
Poles	Code	Pcs/pack.	W [kg]*	Pcs/Ind.**	W [kg]*
02	MCM02007	250	0,63	1000	2,52
03	MCM03007	175	0,66	700	2,65
04	MCM04007	125	0,63	500	2,52
05	MCM05007	100	0,63	400	2,52
06	MCM06007	100	0,76	400	3,02
07	MCM07007	75	0,66	300	2,65
08	MCM08007	75	0,76	300	3,02
09	MCM09007	50	0,57	200	2,27
10	MCM10007	50	0,63	200	2,52
11	MCM11007	50	0,69	200	2,77
12	MCM12007	50	0,76	200	3,02



**MCM\_006** straight, side stackable

10.16 mm / .400" pitch

Poles	Code	Pcs/pack.	W [kg]*	Pcs/Ind.**	W [kg]*
02	MCM02006	175	0,46	700	1,82
03	MCM03006	150	0,59	600	2,34
04	MCM04006	100	0,52	400	2,08
05	MCM05006	100	0,65	400	2,60
06	MCM06006	100	0,78	400	3,12
07	MCM07006	75	0,68	300	2,73
08	MCM08006	75	0,78	300	3,12
09	MCM09006	45	0,53	180	2,11
10	MCM10006	30	0,39	120	1,56
11	MCM11006	30	0,43	120	1,72
12	MCM12006	30	0,47	120	1,87
13	MCM13006	30	0,51	120	2,03



**MCM\_0A1** straight, side stackable

5 mm / .197'' pitch

Poles	Code	Pcs/pack.	W [kg]*	Pcs/Ind.**	W [kg]*
02	MCM020A1	350	0,84	1400	3,36
03	MCM030A1	250	0,90	1000	3,60
04	MCM040A1	175	0,84	700	3,36
05	MCM050A1	150	0,90	600	3,60
06	MCM060A1	125	0,90	500	3,60
07	MCM070A1	100	0,84	400	3,36
08	MCM080A1	100	0,96	400	3,84
09	MCM090A1	75	0,81	300	3,24
10	MCM100A1	75	0,90	300	3,60
11	MCM110A1	75	0,99	300	3,96
12	MCM120A1	75	1,08	300	4,32
13	MCM130A1	60	0,94	240	3,34
14	MCM140A1	60	1,01	240	4,03
15	MCM150A1	60	1,08	240	4,32
16	MCM160A1	50	0,96	200	3,84
17	MCM170A1	50	1,02	200	4,08
18	MCM180A1	45	0,97	180	3,89
19	MCM190A1	45	1,03	180	4,10
20	MCM200A1	40	0,96	160	3,84
21	MCM210A1	40	1,01	160	4,03
22	MCM220A1	35	0,92	140	3,70
23	MCM230A1	35	0,97	140	3,86
24	MCM240A1	30	0,86	120	3,46
25	MCM250A1	30	0,90	120	3,60

**MCM\_0A3** straight, side stackable

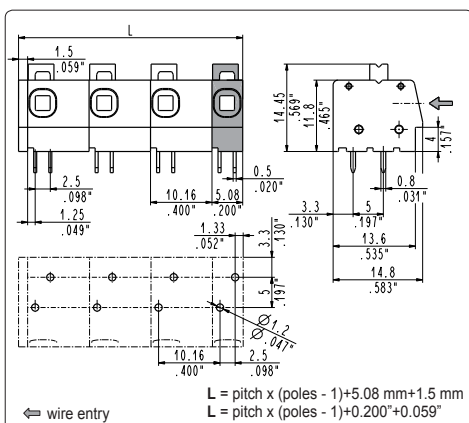
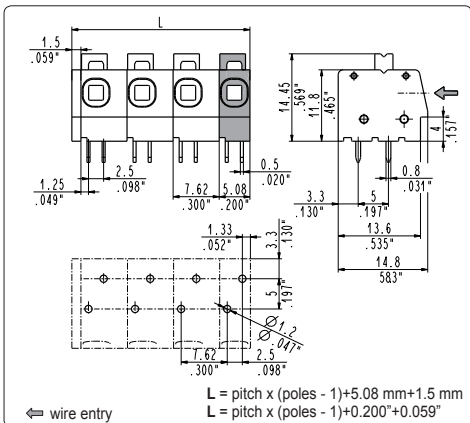
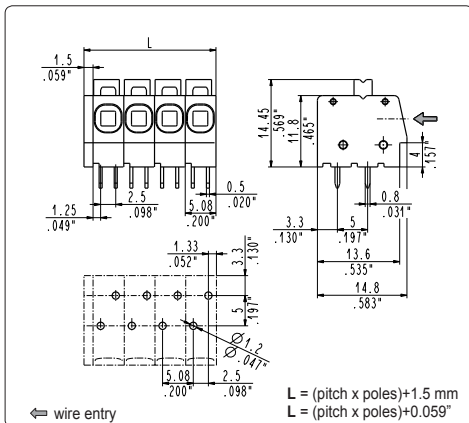
7.5 mm / .295'' pitch

Poles	Code	Pcs/pack.	W [kg]*	Pcs/Ind.**	W [kg]*
02	MCM020A3	250	0,63	1000	2,52
03	MCM030A3	175	0,66	700	2,65
04	MCM040A3	125	0,63	500	2,52
05	MCM050A3	100	0,63	400	2,52
06	MCM060A3	100	0,76	400	3,02
07	MCM070A3	75	0,66	300	2,65
08	MCM080A3	75	0,76	300	3,02
09	MCM090A3	50	0,57	200	2,27
10	MCM100A3	50	0,63	200	2,52
11	MCM110A3	50	0,69	200	2,77
12	MCM120A3	50	0,76	200	3,02

**MCM\_0A2** straight, side stackable

10 mm / .394'' pitch

Poles	Code	Pcs/pack.	W [kg]*	Pcs/Ind.**	W [kg]*
02	MCM020A2	175	0,46	700	1,82
03	MCM030A2	150	0,59	600	2,34
04	MCM040A2	100	0,52	400	2,08
05	MCM050A2	100	0,65	400	2,60
06	MCM060A2	100	0,78	400	3,12
07	MCM070A2	75	0,68	300	2,73
08	MCM080A2	75	0,78	300	3,12
09	MCM090A2	45	0,53	180	2,11
10	MCM100A2	30	0,39	120	1,56
11	MCM110A2	30	0,43	120	1,72
12	MCM120A2	30	0,47	120	1,87
13	MCM130A2	30	0,51	120	2,03



**MCM\_0A5** straight, side stackable

5.08 mm / .200'' pitch

Poles	Code	Pcs/pack.	W [kg]*	Pcs/Ind.**	W [kg]*
02	MCM020A5	350	0,84	1400	3,36
03	MCM030A5	250	0,90	1000	3,60
04	MCM040A5	175	0,84	700	3,36
05	MCM050A5	150	0,90	600	3,60
06	MCM060A5	125	0,90	500	3,60
07	MCM070A5	100	0,84	400	3,36
08	MCM080A5	100	0,96	400	3,84
09	MCM090A5	75	0,81	300	3,24
10	MCM100A5	75	0,90	300	3,60
11	MCM110A5	75	0,99	300	3,96
12	MCM120A5	75	1,08	300	4,32
13	MCM130A5	60	0,94	240	3,34
14	MCM140A5	60	1,01	240	4,03
15	MCM150A5	60	1,08	240	4,32
16	MCM160A5	50	0,96	200	3,84
17	MCM170A5	50	1,02	200	4,08
18	MCM180A5	45	0,97	180	3,89
19	MCM190A5	45	1,03	180	4,10
20	MCM200A5	40	0,96	160	3,84
21	MCM210A5	40	1,01	160	4,03
22	MCM220A5	35	0,92	140	3,70
23	MCM230A5	35	0,97	140	3,86
24	MCM240A5	30	0,86	120	3,46
25	MCM250A5	30	0,90	120	3,60

**MCM\_0A7** straight, side stackable

7.62 mm / .300'' pitch

Poles	Code	Pcs/pack.	W [kg]*	Pcs/Ind.**	W [kg]*
02	MCM020A7	250	0,63	1000	2,52
03	MCM030A7	175	0,66	700	2,65
04	MCM040A7	125	0,63	500	2,52
05	MCM050A7	100	0,63	400	2,52
06	MCM060A7	100	0,76	400	3,02
07	MCM070A7	75	0,66	300	2,65
08	MCM080A7	75	0,76	300	3,02
09	MCM090A7	50	0,57	200	2,27
10	MCM100A7	50	0,63	200	2,52
11	MCM110A7	50	0,69	200	2,77
12	MCM120A7	50	0,76	200	3,02

**MCM\_0A6** straight, side stackable

10.16 mm / .400'' pitch

Poles	Code	Pcs/pack.	W [kg]*	Pcs/Ind.**	W [kg]*
02	MCM020A6	175	0,46	700	1,82
03	MCM030A6	150	0,59	600	2,34
04	MCM040A6	100	0,52	400	2,08
05	MCM050A6	100	0,65	400	2,60
06	MCM060A6	100	0,78	400	3,12
07	MCM070A6	75	0,68	300	2,73
08	MCM080A6	75	0,78	300	3,12
09	MCM090A6	45	0,53	180	2,11
10	MCM100A6	30	0,39	120	1,56
11	MCM110A6	30	0,43	120	1,72
12	MCM120A6	30	0,47	120	1,87
13	MCM130A6	30	0,51	120	2,03

\*W [kg]: approximate weight per box in kg

\*\*Industrial packaging: add "-00000E" at standard code